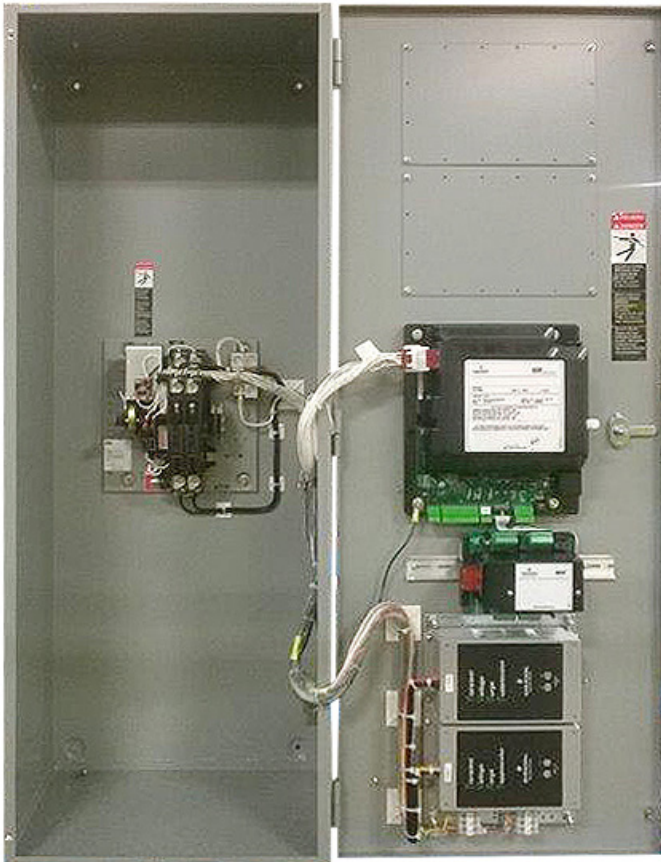


ATS-G Series

Automatic Transfer Switch Series

ATS-G Series Panels offer the ASCO® Series 300 automatic transfer switch with Group G Controller. The switch may be ordered alone, with surge protection, or with communication accessories to insure that critical loads are connected to the utility or to an emergency power source.



Actual product may vary from photograph. Please request product drawings from solutions@intersectinc.com

Automatic Transfer Switch, ASCO Series 300 with Group G Controller

- Single solenoid, true double-throw, transfer mechanism
 - UL 1008 Listed
 - Complies with NFPA 110 for Emergency and Standby Power Systems
- Group G Controller offers easy to navigate LCD display with soft keypad and six LED indicators
- Historical event log (up to 300 events)
- Statistical monitoring information
- Diagnostic functions
- Pre- and post-transfer time delay settings
- Voltage & frequency sensing
 - Under and over frequency settings on normal and emergency
 - Voltage and frequency parameters adjustable in 1% increments
- Auto start/stop engine control contacts

Accessories available with the ATS-G Series Panel

- Accessories included with the panel:
 - Option 11BX - programmable engine exerciser
 - Option 18RX - source availability relay contacts
- Other accessories available included:
 - Acc 23GA/GB - load current meter card (23GA for 1Ø and 23GB for 3Ø)
 - Acc 44G - strip heater
 - Acc 72EE - connectivity module for remote monitoring and control capabilities

Contact Intersect at solutions@intersectinc.com for ATSs in a wide range of service voltages and amperages.

Intersect™, Inc.

Quality products. Premium customer care. Integrated solutions.

General Data

Enclosure weight and dimensions

Varies by service voltage, amperage, and option configuration. Request specific panel drawings for this product information.

Enclosure type

UL Type 1 (Indoor)
UL Type 3R (Outdoor)
NEMA 4, 4X, and Stainless Steel Boxes

Weight

70 lbs (approx.)

Service voltage

All service voltages and amperages available

ATS Accessories (standard)

11BE – Fully-programmable engine exerciser

- Seven independent engine generator exerciser routines to exercise an engine generator, with or without load, on a daily, weekly, bi-weekly or monthly basis
- Exerciser setting can be displayed and changed from the user interface keypad
- RS 485 and MODBUS-enabled with common alarm output contact

18RX – Relays for source availability

- Contacts for utility and one emergency source (second emergency contacts are on switch)
- Additional output relay, default to indicate common alarm

Optional Accessories

23GA – Load current metering card

Measures 200 A, 1 \emptyset load current

23GB – Load current metering card

Measures 200 A, 3 \emptyset load current

44G – Strip heater

72EE – Remote connectivity module

- Content-rich monitoring screens enable real time information for power metering, event logs, voltages, time delays, and alerts
- Web page dashboards can easily be viewed on any mobile or desktop device on the network by multiple users
- Allows for remote switch transfer

Product No	Description
ATS-G-1PH-11BE	120/240 or 120/208; 200 A, 1 \emptyset ; ASCO Series 300-G ATS; Accessories 11BE, 18RX; NEMA Type 1
ATS-G-3PH-11BE	120/208; 200 A, 3 \emptyset ; ASCO Series 300-G ATS; Accessories 11BE, 18RX; NEMA Type 1
ATS-G-1PH-11BE-3R	120/240 or 120/208; 200 A, 1 \emptyset ; ASCO Series 300-G ATS; Accessories 11BE, 18RX; NEMA Type 3R
ATS-G-3PH-11BE-3R	120/208; 200 A, 3 \emptyset ; ASCO Series 300-G ATS; Accessories 11BE, 18RX; NEMA Type 3R
Optional Accessories	
23GA	120/240; 200 A, 1 \emptyset ; current metering card with 2 wired current transformers
23GB	120/208; 200 A, 3 \emptyset ; current metering card with 3 wired current transformers
44G	Strip heater
72EE	120/240 or 120/208; 200 A or 400 A, 1 \emptyset or 3 \emptyset ; connectivity module

For more service voltages and amperages, as well as for Product Nos. for automatic transfer switches with surge protection or accessories, please contact solutions@intersectinc.com



Intersect, Inc.