

# PTLC-ATS-3S-12200-CL

*Service Entrance Solution for WICs, WUCs, and Small Cell Sites*

The PTLC-ATS-3S-12200-CL is a power transfer load center for 240/120, single phase, 200 A applications with an ASCO® Series 300 automatic transfer switch with a Group G Controller designed for small AC service entrance spaces. The compact aluminum enclosure measures 60"H x 25"W (35"W with CamLok Connector Panel) x 15"D.

The 3-source design includes a "main" for utility, plus mechanically interlocked mains to enable selection of one of two emergency sources. Integrated components include Strikesorb® surge protection; a 30-position NQ Square D panel board; Acc 4AR, utility fail relay; Acc 11BE, programmable engine exerciser; Acc 18RX, source relay contacts; an external GFIC receptacle; and CamLok generator connection panel. In the standard design, the CamLok panel is mounted on the right. A reverse design, with the CamLok panel on the left, also is available.

#### Automatic Transfer Switch, ASCO Series 300 with Group G Controller

- Single solenoid, true double-throw, transfer mechanism
  - UL 1008 Listed and complies with NFPA 110 for Emergency and Standby Power Systems
- Group G Controller offers easy to navigate LCD display with soft keypad and six LED indicators
- Historical event log, statistical monitoring, and diagnostic functions
- Pre- and post-transfer time delay settings for transfer and re-transfer
- Voltage & frequency sensing
  - Under and over frequency settings on normal and emergency
  - Voltage and frequency parameters adjustable in 1% increments
- Auto start/stop engine control contacts

#### Strikesorb Surge-protected Loads

Strikesorb surge protection safeguards critical loads from transients and load transfer spikes. Strikesorb withstands repeated surges, providing cost-effective and maintenance-free operation in demanding environments.

#### 30-circuit Square D Panel Board

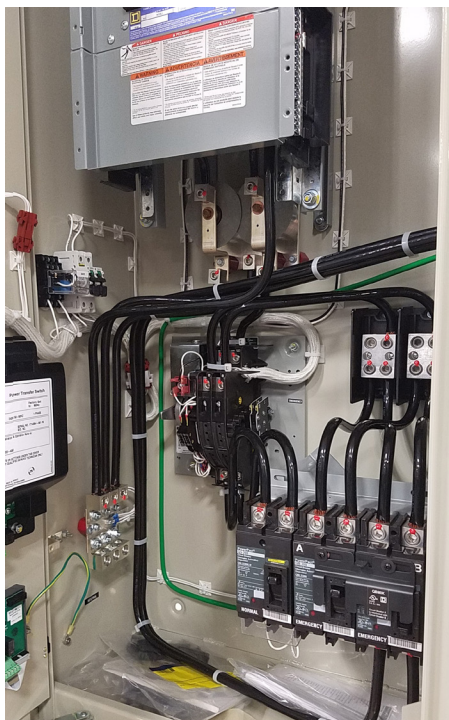
- NQ Series panel accepts bolt-on or plug-on branch breakers
- NQ Panel Board Breaker Retention Bracket (patent pending)

For a quotation, contact Intersect at [solutions@intersectinc.com](mailto:solutions@intersectinc.com).

Actual product may vary from photograph.

## Intersect™, Inc.

Quality products. Premium customer care. Integrated solutions.



3-Source Mains

Product No	Description
PTLC-ATS-3S-12200-CL	240/120, 1Ø, 200A, 3-source PTLC integrates ASCO Series 300-G ATS; Strikesorb; 30-position Square D NQ load center; GFCI receptacle; ICGC CamLok connector panel mounted on the right side; aluminum NEMA 3R enclosure (RAL 7032)
PTLC-ATS-3S-12200-CL-LM	240/120, 1Ø, 200A, 3-source PTLC integrates ASCO Series 300-G ATS; Strikesorb; 30-position Square D NQ load center; GFCI receptacle; ICGC CamLok connector panel mounted on the left side; aluminum NEMA 3R enclosure (RAL 7032)

## General Data

### Enclosure dimensions\* (H x W x D)

60" x 25" x 15"

60" x 35" x 15" with CamLok enclosure

\*Dimensions may change. Drawings may be requested for current outline specifications.

### Weight

≥ 150 lbs

### Door

3-point pad-lockable

ICGC also is pad-lockable

### Convenience receptacle

20A GFCI external receptacle

### Rating

NEMA 3R

### Composition

Aluminum

### Powder coat paint

RAL 7032

Other Pantone colors may be requested

### UL certification

UL 891 – Dead Front Switchboard

UL 1008 – ATS and ICGC

## Load Center

### Panel board type

Square D, NQ Series

### Circuit breaker positions

30 circuits

## Electrical Specifications

120/240 V, 1Ø, or 120/208 V, 3Ø

200 A maximum

### SCRR based on branch devices

42 kA, Sq D Type QH or QHB

22 kA, Sq D Type ZO-VH or QOB-VH

10 kA, Sq D QO or QOB

## ATS Accessories

### 4AR – Utility fail relay

### 11BE – Fully-programmable engine exerciser

- Exercise with or without load
- Exercise daily, weekly, bi-weekly or monthly
- Setting displayed and changed from interface keypad

### 18RX – Relay for source availability

- Contacts for utility and one emergency source (second emergency contact on switch)
- Additional output relay, default to indicate common alarm

## Suppression Technology

### Technology type

Strikesorb 40mm, 120 V module

### Certification

UL 1449 3rd Edition (or current)

CE

VDE

## ICGC – CamLok Generator

### Connection Panel

Color-coded connectors

Pad-lockable enclosure

**Intersect, Inc.**